



VAUTH-SAGEL

STORAGE SOLUTIONS FOR KITCHENS



MANY PEOPLE ARE LOOKING FOR
INDIVIDUALITY IN THEIR KITCHEN.



Wall cabinets

Corner cabinets

Base cabinets

WE CAN PROVIDE IT.



Miscellaneous and Accessoires

Waste bin systems

Tall cabinets





CONTENT

STORAGE VERSIONS	6
------------------	---

BASE CABINETS

Pull-out storage unit	10
DSA base unit side pull-out	12
Base liner base unit pull-out	14

WASTE BIN SYSTEMS

Öko center	16
Öko freelineer	18
Öko flexliner	20
Öko liner	22
Organisation drawer	24
Öko xxliner	26

CORNER CABINETS

Flex corner	28
Wari corner	30
Twin corner	32
Slide corner	34
Recorner maxx	36

TALL CABINETS

HSA pull-out larder unit	38
VSA synchro pull-out storage unit	40
VSA 300/400 pull-out storage unit	42
VSA pull-out storage unit	44
DUSA pull-out storage unit	46

WALL CABINETS

Dish rack	48
Spice racks	50

MISCELLANEOUS AND ACCESSORIES

Tower holder	52
Storage rack	54

MARKET SPECIFIC VARIANTS	56
--------------------------	----

COMPETENCES	58
-------------	----

DEPENDABLE QUALITY »MADE IN GERMANY«	62
--------------------------------------	----

ECOLOGY AND SUSTAINABILITY	64
----------------------------	----



Premea Artline



Classic

STORAGE VERSIONS BASKETS

Five storage versions for maximum flexibility.

The entire Vauth-Sagel basket programme is available as a modular system, which allows the combination of guides and frames with all five storage options.



Saphir



Premea



Premea Glassline



Premea Artline



Recorner maxx Smart concave



Basic

STORAGE VERSIONS ROUND SHELVES

Three storage versions for every design preference.

Vauth-Sagel will design a round base exactly to your requirements. There are three very different forms to choose from.



Rail



Smart



Pull-out storage unit: two storage racks

PULL-OUT STORAGE UNIT

The multi-level pull-out makes use of even the tiniest space.

Two fixed racks transform the smallest gap into a stacking-space miracle for storing towels or baking trays.

Details

- Cabinet width: 150 mm
- Minimum installation depth: 495 mm
- Minimum installation height: 530 mm
- EasyFit: tool-free installation onto the runners
- Three versions: two storage racks, towel holder and baking tray storage
- 3-D front adjustment allows simple, convenient front adjustment
- Integral soft-closing and self-closing on both runners
- Load-bearing: 6 kg maximum per rack
- Versions available for 90° or 45° angled front



Baking tray storage



Towel holder



DSA Premea Artline



DSA BASE UNIT SIDE PULL-OUT

A new look for the traditional base unit solution.

The traditional system that fits into any space has been redeveloped in terms of design and functionality. The basic pull-out, which fits into any space, is an unbeatable bestseller.

Details

- Cabinet widths: 150, 200 and 300 mm
- Minimum installation depth: 495 mm
- Minimum installation height: 485 mm
- EasyFit: tool-free connection to front
- Storage versions for 90°, 45° and 35° models
- Storage units for towels and baking trays
- Individual height adjustment for baskets
- 3-D front adjustment allows simple, convenient front adjustment
- Integral soft-closing and self-closing on both runners
- Installation template: no measuring necessary when installing into cabinet
- Maximum load-bearing: 20 kg
- Storage versions: Saphir, Premea, Premea Glassline and Premea Artline



Base liner Premea Artline



BASE LINER BASE UNIT PULL-OUT

The variable storage space system for base cabinets.

Height-adjustable storage elements are on either side at the second and third level to individually adjust the storage heights. To use the available storage space even more flexibly and individually bottle storage elements can be ordered instead. Thanks to an integrated damping, opening and shutting the base cabinet operates extremely quietly.

Details

- Cabinet widths: 450, 500 and 600 mm
- Minimum installation depth: 470 mm
- Installation height: 650 to 850 mm
- Height-adjustable storage elements at the second and third level
- Storage units for bottles
- Individual height adjustment for baskets
- 3-D front adjustment allows simple, convenient front adjustment
- Integral soft-closing and self-closing on both runners
- Maximum load-bearing: 40 kg
- Storage versions: Saphir, Premea, Premea Glassline and Premea Artline



Öko center four-bin version (3x9 and 1x12 litres)



ÖKO CENTER WASTE BIN SYSTEM

The hygienic, flexible and practical waste bin system.

When the system is opened the lid lifts up and the bins swing out; when the system is closed, the lid is automatically replaced on the bins. Cleanliness and hygiene are of prime importance. The bins are constructed of high-grade plastic with extra-smooth sides, making them easier to clean.

Details

- Minimum cabinet widths: 400 mm for the single- and two-bin versions
- Minimum cabinet widths: 500 mm for three- and four-bin versions
- Minimum installation depth: 350 and 450 mm
- Minimum installation height: 525 mm
- EasyFit: tool-free removal and replacement after initial installation
- Easy removal of entire system for cleaning the cupboard, for example
- No additional strain on the front
- Bins swing out automatically when the door is opened
- Can be combined with all standard hinges
- Total capacity system: 18 to 39 litres



single-bin version (1 x 18 litres)



two-bin version (2 x 9 litres)



Öko freliner with four bins



ÖKO FREELINER WASTE BIN SYSTEM

The ideal solution for freedom of design in waste disposal.

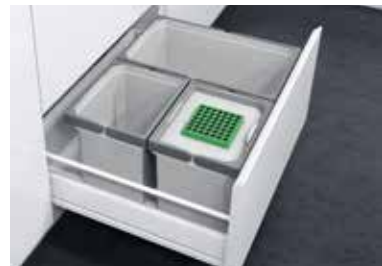
The Vauth-Sagel system provides freedom with its separate bins that can be positioned in a variety of combinations. Based on the drawer runners of the existing unit, the Öko freliner can be combined with any of the comfort features provided by the manufacturer, such as total extension, soft-close and automatic push-opening. This system of bins flexibly positioned in a drawer is stabilised by either a non-slip mat or an appropriate thermo-formed tray.

Details

- Bin height: 216, 256 or 326 mm
- Non-width-dependent installation
- Later installation into any pull-out system
- Lid options, standard closed lid and bio-lid with active charcoal filter
- Special insert for perfect bag fixing
- Choice of fixed installation or removable powder-coated lid
- Bin capacity: 10 to 29 litres



standard closed lid



bio-lid with active charcoal filter



Öko flexliner three-bin version (1 x 22 and 2 x 10 litres)

ÖKO FLEXLINER WASTE BIN SYSTEM

The hygienic, flexible and practical waste bin system.

The Öko flexliner is designed to complement current kitchen planning. The system is based on the standard drawer pull-out, fitted with a screw-fixed base frame that holds the individual waste disposal bins. Simple, practical and satisfying.

Details

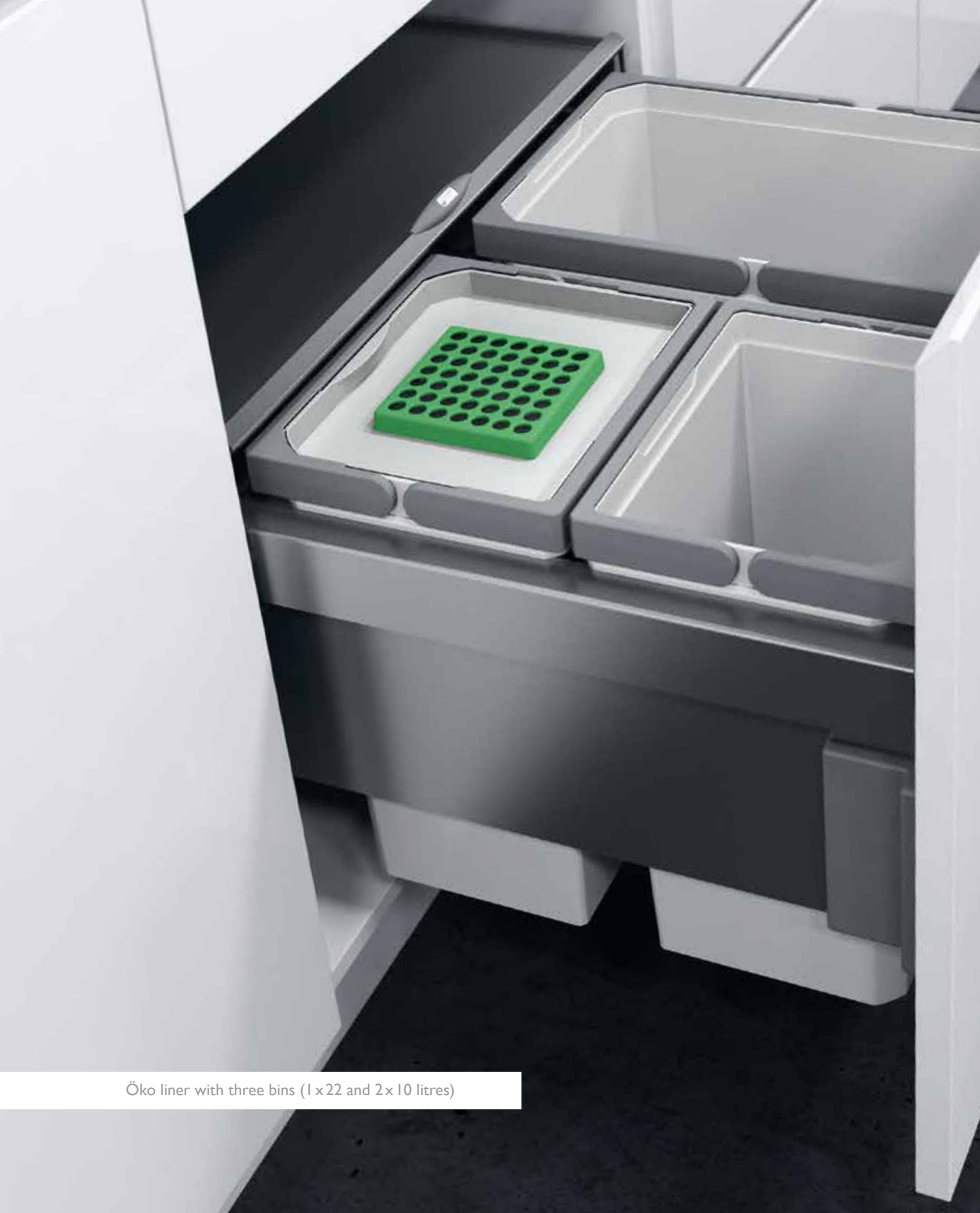
- Cabinet widths: 400, 450, 500, 600, 800 and 900 mm
- Installation depth: 400 mm
- Installation height: 366 or 466 mm
- Non width-dependent installation
- Later installation in any pull-out system
- Integral stabilisation of the front
- Additional storage available using powder-coated removable lid
- Total capacity system: 20 to 84 litres
- Bin capacity: 8.5 to 39 litres



two-bin version (2x22 litres)



three-bin version (1x22 and 2x10 litres)



Öko liner with three bins (1 x 22 and 2 x 10 litres)

ÖKO LINER WASTE BIN SYSTEM

The smart solution for clean, convenient waste disposal.

The Öko liner concept includes fascia pull-out with a choice of two installation heights. This space-effective, ultra-hygienic system with its choice of bin capacity is the perfect solution for every kitchen. The bins are constructed of high-grade plastic and are easy to clean. The soft-close pull-out guarantees quiet, effortless closing.

Details

- Cabinet widths: 400, 450, 500, 550 and 600 mm
- Installation depth: 464 mm
- Installation height: 370 and 470 mm
- EasyFit: tool-free installation of bin support onto the runners
- Integral installation template: no measuring necessary when installing into cabinet
- Integral 3-D front adjustment using an excenter
- Integral soft-closing and self-closing on both versions
- Additional storage available on powder-coated removable lid
- Special version with an installation depth of 310 mm for installation in front of under-worktop appliances
- Total capacity system: 20 to 60 litres



two-bins maxi
(1 x 39 and 1 x 21 litres)



two-bins with reduced depth
(2 x 15.5 litres)



Organisation drawer with 2x2,7 and 3x1,2 litre bins in combination with Öko liner

ORGANISATION DRAWER

The intelligent, add-on storage solution for base cabinets.

The add-on module that acts as an organisation drawer and enhances the waste bin system with an innovative storage solution for kitchen base cabinets. Thanks to the multifunctional fitting options, plastic containers can be variably mounted in the frame construction – depending on the position of the water connections in the base cabinet – and used as handy containers for storing cleaning and kitchen utensils. Mounted on two full pull-outs, the Organisation drawer opens smoothly and closes with gentle attenuation. The mounting with EasyFit and pre-fixing template is just as easy as the handling is convenient.

Details

- Cabinet widths: 500 and 600 mm
- Installation depth: 490 or 235 mm
- Installation height: 100 mm
- EasyFit: tool-free installation of bin support onto the runners
- Integral installation template: no measuring necessary when installing into cabinet
- Integral soft-closing and self-closing on both versions

interior
innovation
award
2014

Winner



Organisation drawer with 1 x 2.7 and
3 x 1.2 litre dishes



Organisation drawer with 2 x 2.7 and
3 x 1.2 litre dishes



Öko xxliner with three bins (1 x 21 litres and 2 x 35 litres)

ÖKO XXLINER WASTE BIN SYSTEM

Large capacity in a small cabinet.

The space-saving Öko xxliner, with its own rail system, automatic closure and soft-close can be installed laterally in a very small kitchen unit, not necessarily below the sink, providing high-capacity, convenient waste disposal close to the worktop.

Details

- Cabinet widths: 300, 400, 450, 500 and 600 mm
- Minimum installation depth: 515 mm
- Minimum installation height: 490 or 580 mm
- Integral 3-D front adjustment using an excenter
- Integral soft-closing and self-closing on both versions
- Additional storage available using powder-coated lid
- Total capacity system: 29.5 to 91 litres



two-bin version (2×35 litres)



three-bin version (1×21 and 2×35 litres)



Flex corner Premea



CORNER UNIT FLEX CORNER

Maximum access in any corner cabinet makes the best use of storage space and keeps things organized and accessible.

Flex corner maximizes space in corner cabinets while allowing full accessibility to the entire unit. Right and left handed versions are identical. This non-handed corner unit is easily installed to the bottom of the cabinet. With the Flex corner all the space in corner cabinets is turned into functional, reliable and stylish storage space.

Details

- Cabinet widths: 900 – 1.200 mm
- Door widths: 450 – 600 mm
- Installation depth: 480, 500, 575 mm
- Installation height: min. 530 mm
- Individual height adjustment for baskets
- Installation template: no measuring necessary when installing into cabinet
- Integral soft-closing and self-closing on both pull-outs
- Maximum load: 8 kg per basket
- Maximum load-bearing: 32 kg
- Storage versions: Classic, Saphir, Premea



Wari corner Premea Artline



CORNER UNIT WARI CORNER

The classic among corner unit solutions.

The Wari corner unit makes access easy because of its user-friendly movement sequence when it is opened. Stored goods can be reached easily as the front baskets swing out in one smooth, fluid movement as it opens, making it easy to reach the rear baskets which then move forward into the front section of the unit. The integral self-closing damping unit guarantees quiet, effortless closure of the pull-out.

Details

- Cabinet widths: 800, 900 and 1,000 mm
- Door widths: 400, 450, 500 and 600 mm
- Minimum installation depth: 485 mm
- Minimum installation height: 530 mm
- EasyFit: tool-free installation of the front onto pull-out
- 3-D front adjustment allows simple, convenient front adjustment
- Individual height adjustment for baskets
- Maximum load: 8 kg per front basket, 9.5 kg per rear basket
- Maximum load-bearing: 35 kg
- Storage versions : Classic, Saphir, Premea, Premea Glassline and Premea Artline



Twin corner Rail



CORNER UNIT TWIN CORNER

Elegant use of storage in a corner unit.

The combined sequence of movements swings both storage units into the user's reach at the same time, giving the user a very convenient way to access stored goods. All this with an elegant and shapely profile.

Details

- Cabinet widths: 800, 900, 1,000 or 1,200 mm
- Door widths: 400, 450, 500 and 600 mm
- Minimum installation depth: 490 mm
- Minimum installation height: 500 mm
- EasyFit: tool-free installation of storage units onto the supporting arms
- Maximum load-bearing: 40 kg
- Maximum load-bearing: 20 kg per base
- Storage versions: Basic, Rail and Smart



Slide corner Smart



CORNER UNIT SLIDE CORNER

A perfect all-round concept for the optimum use of storage space in a corner unit.

The special movement of Slide corner allows comfortable access to even the smallest space. Adjacent items such as a dishwasher can even be opened at the same time.

Details

- Cabinet widths: 800, 900, 1,000 or 1,200 mm
- Door widths: 400, 450, 500 and 600 mm
- Minimum installation depth: 490 mm
- Installation height: 500 mm
- EasyFit: tool-free installation of storage units onto the supporting arms
- The bases can be opened independently
- 2-, 3- or 4-base options available
- Upper bases can be installed at different heights
- Maximum load-bearing: 15 kg per base
- Maximum load-bearing: 30 kg (two-base version)
- Storage versions: Basic, Rail and Smart



Recorner maxx Rail 4/4



CORNER UNIT RECORNER MAXX

The corner unit solution with optimum storage space.

The Recorner maxx corner unit solution stands out because of its unique construction. There are no central, space-taking uprights. This creates up to 20 percent more storage space in the middle of the base, ideal for storing awkward kitchen utensils. The bases are stabilised by a traverse that runs through the cabinet. This function is also useful for dishwasher base corner units. It also wins out aesthetically: no more visually distracting parts. The mechanics are practically invisible.

Details

- Cabinet width: 600×600, 650×650, 800×800 and 900×900 mm
- Minimum side installation depth: 490 mm
- EasyFit: tool-free installation of storage units onto the supporting arms
- Flexible base positioning irrespective of cabinet height
- Can be installed in lower units, high units and wall units
- Can be installed into an existing kitchen
- Maximum load-bearing: 27.5 kg per base (in units measuring 600 x 600 mm and 650 x 650 mm, max. 12 kg per base)
- Unit versions: 3/4, 4/4 and concave
- Storage versions: Basic, Rail and Smart



HSA Premea Artline



HSA PULL-OUT LARDER UNIT

Complete pull-out and elegant design allows access to the contents of every basket.

The front opens and slides shut easily and silently thanks to damping and self-closing on the full-extension runners. The frame and front attachment have a unified high-quality double-powder-coated surface.

Details

- Cabinet widths: 300, 400, 450 and 500 mm
- Installation depth: 470, 500 or 575 mm
- Installation height: 650 to 2,350 mm
- EasyFit: self-locking system for tool-free installation of frame into upper and lower guide rails
- 3-D front adjustment allows simple, convenient front adjustment
- Front stabilised by fascia strips
- Individual height adjustment for baskets
- Heavy-duty, noise-restricted roller guides
- Synchronised upper and lower end stops
- Damping with self-closing
- Maximum load-bearing: 80 kg
- Maximum total load-bearing: 120 kg
- Storage versions: Classic, Saphir, Premea, Premea Glassline and Premea Artline



VSA synchro Premea

VSA SYNCHRO PULL-OUT STORAGE UNIT

Full access to the supplies with minimum opening angle.

In addition to a VSA version with a wide angle hinge, the VSA synchro were specifically developed for corner situations in which a small opening angle is required. The ramped baskets automatically move towards the user upon opening. By a pull on the tray the stored goods can be completely moved in front of the cabinet.

Details

- Cabinet widths: 300 and 400 mm
- Minimum installation depth: 500 mm
- Installation height: 1,200 to 2,140 mm
- EasyFit: tool-free installation of frame onto the lower runners
- EasyFit: tool-free attachment of carriers to mounting frame
- Individual height adjustment for baskets
- Maximum load-bearing: 75 kg
- Storage versions: Classic, Saphir, Premea, Premea Glassline and Premea Artline



VSA 300/400 Saphir

VSA 300/400 PULL-OUT STORAGE UNIT

The storage solution wonders for narrow cabinets.

The practical storage cabinet pull-out with a flowing opening movement uses narrow cabinets for optimal storage space. With a single grip it provides an insight into the entire contents of the cabinet. The elegant tall cabinet solution with a door opening of 160 ° offers individual, ideal adjustment to the cabinet contents by height-adjustable shelves. Storage containers and packaging find a suitable place here. They are easily visible and thus ready to hand. With only one pull the total inventories are placed in front of the cabinet - the optimal storage solution.

Details

- Cabinet widths: 300 and 400 mm
- Minimum installation depth: 480 mm
- Installation height: 1,200 to 2,140 mm
- EasyFit: tool-free installation of frame onto the lower runners
- EasyFit: tool-free attachment of carriers to mounting frame
- Individual height adjustment for baskets
- Maximum load-bearing: 75 kg
- Storage versions: Classic, Saphir, Premea, Premea Glassline and Premea Artline



VSA Premea Artline





VSA PULL-OUT STORAGE UNIT

Storage that moves.

The attraction of VSA lies in its maximum storage together with its easy access. The innovative VSA larder pull-out sets new standards in comfort and design. It stands out because of its opening mechanism which makes stored goods accessible to the user in one automatic movement, offering the best overview.

Details

- Cabinet widths: 450, 500 and 600 mm
- Minimum Installation depth: 480 mm
- Installation height 1.200 to 2.140 mm
- EasyFit: tool-free installation of frame onto the lower runners
- EasyFit: tool-free attachment of carriers to mounting frame
- Individual height adjustment for baskets
- Maximum load-bearing: 75 kg
- Storage versions: Classic, Saphir, Premea, Premea Glassline and Premea Artline



DUSA Premea Artline



DUSA PULL-OUT STORAGE UNIT

The proven classic DUSA pull-out storage unit guarantees high degrees of convenience.

Its extraordinary user-friendliness, its high safety standards and its harmonious design make it an element that you do not want to miss in a state-of-the-art kitchen. The fitting not only provides large storage space, but also fulfills all the requirements of a comfortable storage space solution. This can go up to a chef pantry, where two storage cabinets are arranged next to each other, representing an impressive appearance when opened from the center.

Details

- Cabinet widths: 450, 500 and 600 mm
- Minimum Installation depth: 480 mm
- Installation heights: 650 to 2,140 mm
- EasyFit: tool-free installation of frame onto the lower runners
- EasyFit: tool-free attachment of carriers to mounting frame
- Individual height adjustment for baskets
- Maximum load-bearing: 20 kg door (5 kg per basket), 80 kg slide (20 kg per basket)
- Storage versions: Classic, Saphir, Premea, Premea Glassline and Premea Artline





DISH RACK

Practical, clearly arranged and robust: A dish rack for wall cabinets.

Small details often make the difference in creating clearly structured and well organized kitchens. And so does the dish rack: the crockery, used on a daily basis, is clearly ordered and easy to access. The practical drop collector keeps the cabinet dry.

Details

- Cabinet widths: 600 and 900 mm
- Installation depth: 300 to 340 mm
- Because of the sturdy frame, additional storage elements and a drop collector can be attached
- The flat storage element can be used up to the side of the cabinet in its full width
- The dish rack is firmly fixed in the cabinet
No unintended disarrangement of the crockery when taken out
- Integrated fastening of the rear side of the cabinet in the aluminium frame
- Storage elements available in chrome and RAL 9006





SPICE RACKS

Intelligent solutions for storing spice jars.

Optimal use of space in the wall cabinet. The search for the perfect spice becomes much easier with the practically and comfortably designed spice rack.

Details

- Door adapter for cabinets: 300, 400, 450, 500 and 600 mm
- Problem-free fastening to framed doors possible using the adapter strips
- Available for 12 or 24 spice jars





TOWEL HOLDER

Extendable towel holder for kitchens and bathrooms.

Often the small things provide more order and comfort in the kitchen or bathroom. The clean and tidy storage of towels in kitchen and bathroom cabinets is a functional detail in the household.

Details

- Minimum Installation depth for kitchen cabinets: 465 mm
- Minimum Installation depth for bathroom cabinets: 310 mm
- Available with 1, 2, or 3 arms
- Suitable for side and overhead installation
- With catching function for the inserted and extended position
- Variants: chrome and aluminium





STORAGE RACK

The storage rack provides a quick return to order and clarity in the kitchen cabinet.

Practical, clearly arranged and robust: A storage rack for base, tall and wall cabinets. Small details are often responsible for a clear and tidy appearance in a kitchen. This rack is a striking example for that.

Details

- Cabinet dimensions: 450, 600, 800, 900, 1,000 and 1,200 mm
- Storage rack with locking function for wall thickness from 16 to 19 mm
- Shelf depth: 270 and 465 mm
- Shelves for base, tall and wall cabinets
- Load capacity: 15 kg
- Rack variants: Saphir and Scalea glass



HSA and Wari corner with maple trays



MARKET SPECIFIC VARIANTS

Dediction to the market, passion for design and attention to details.

The complete Vauth-Sagel product range has been modified as well for »Face Frame« kitchens and offers an extensive variety.



VSusan Kidney with plastic trays

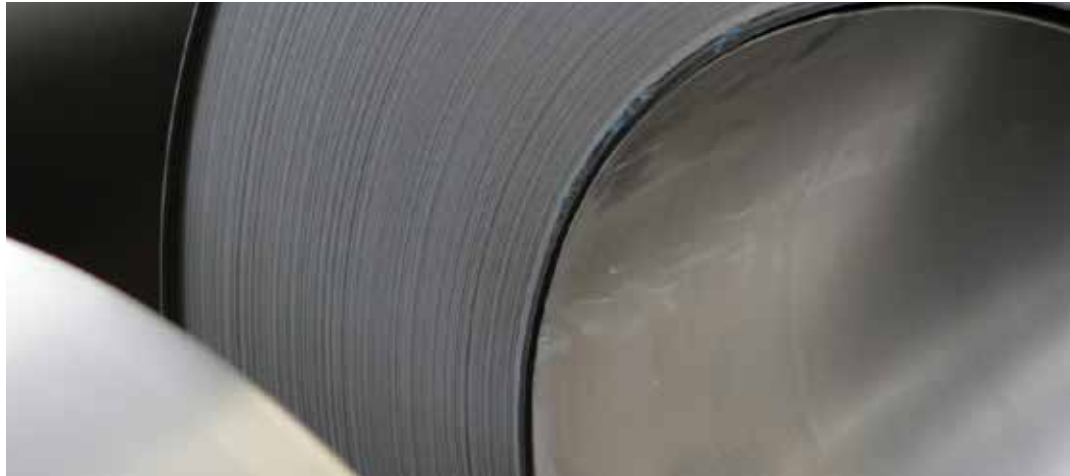


Pull-out storage unit

Wire



Sheet Metal



Wood



Plastic



OUR UNIQUE MATERIAL EXPERTISE IN PROCESSING WIRE, STEEL, SHEET METAL, WOOD AND PLASTIC.

Whether we are producing components from wire, steel, sheet metal, wood or plastic – our yardstick is perfection. Our total concept, »unique material expertise under one roof« creates for our customers a unique value-added chain. Our central development department can create numerous possibilities by combining several different materials.

It doesn't matter whether the material is wire, steel, sheet metal, wood or plastic, or whether the ideal product for the customer is a combination of all five, our reply to the demands posed by the industry is always: for individual system solutions using a variety of materials, Vauth-Sagel is your number one contact both now and in the future.

Caravaning



Automotive



Medical/Care



Multimarket



THE BEST SOLUTIONS FOR THE MOST SECTORS

Caravaning

As specialists in intelligent storage solutions we can provide the caravaning sector with a whole range of products that entirely meet comfort and design requirements as well as safety standards.

Automotive

For decades now it has been our practice as well as one of our strengths to develop production-ready products in close consultation with our customers. These are then manufactured and further improved in-house, without loss of time.

Medical/Care

Medical and care technology demand an especially high safety standard, particularly in terms of precision as the health of each patient is at stake. Prominent clients rely on our operational excellence in this sector.

Multimarket

Vauth-Sagel develops and produces system components for a broad palette of applications. Market-oriented solutions that can be individually implemented for each client and which complete our portfolio.

Location Brakel-Erkeln: wire
processing and headquarter
production area 22,000 m²



Location Paderborn:
injection moulding
production area 33,000 m²



Location Beverungen:
woodworking
production area 21,000 m²



Location Korbach:
sheet metal processing
production area 27,000 m²





MADE IN GERMANY

Dependable quality.

Vauth-Sagel has been developing and finishing its products at its manufacturing base in Germany for more than 50 years. Thanks to our expertise and attention to detail, we are able to create top-quality, innovative products, and have thus become an important partner in the national and international furniture industry.

The familiar global brand term »Made in Germany« now has more meaning than ever. Across all the important markets worldwide, this phrase represents not just the highest product quality and outstanding engineering, but also reliable delivery and comprehensive services. This brand term is an important selling point for us in the global marketplace. So important, that in future it will be brought more sharply into focus in our communication.

The German guarantee of quality forms the basis of the Vauth-Sagel quality label, which in future will not only verify the product's provenance but will also have the potential to highlight its outstanding properties.

- EasyFit user-friendly assembly
- FSC® certification for timber used
- International environmental management standard ISO 14001
- Safety guarantee (LGA-tested)

In order to satisfy these demands, we shall be developing and manufacturing our products in Germany today and in the future. »Think global, act local«, a company principle with promise.

Data and facts

800 employees in total, of whom 76 apprentices in 16 apprenticeship areas

Production areas: 103,000 m²

Types of product: over 7,500

Products manufactured annually: more than 20 million

Products manufactured daily: approx. 90,000

Export quota: 55%



ECOLOGY AND SUSTAINABILITY

The basis of our decision-making for over five decades.

Our long-term success is based not only on the targeted direction of our product development processes or even on our forward-looking corporate business policies, but also on a conscientious approach to how we obtain the necessary resources and respect the environment. Quality, safety at work and environmental consideration together with efficiency and the responsible use of energy are some of our principal corporate aims and are also the personal responsibility of each and every employee. Our responsibility for the environment is firmly anchored as an overarching principle in the Vauth-Sagel corporate image.

The focus is on:

- Active employee protection
- Reasonable use of materials and energy
- Minimal environmental pollution and damage
- Sustainable product development

It goes without saying that compliance with current regulations is part of this, but it also includes the determination to monitor every process every day and to optimise them above and beyond the required standard.

■ What does this mean for Vauth-Sagel?

The reassuring feeling of not only talking about sustainability but also of translating our policies into actions.

■ What does this mean for Vauth-Sagel customers?

Collaboration with a partner who has a documented policy of responsible trading.





A FAMILY-RUN CONSORTIUM

More than 50 years in the service of our customers.

Vauth-Sagel looks back on more than 50 successful years in business. For all this time we have considered ourselves as close partners of industry. This view of ourselves is based on our huge development and material expertise, developed over the decades, which we have always placed at the disposal of our global clients. As a family firm managed by its owners, we are well-placed to make long-term strategic business plans and focused investments, particularly in research and development. This policy, together with production in the heart of Germany, guarantees the planning security of a partner who consistently operates at the highest level in terms of processes and quality.

**This is our understanding of
»Added value, Made in Germany«.**

IMPRINT

It is in its entirety the property of Vauth-Sagel and must not be reproduced in any way. We reserve all rights under copyright law. We take no responsibility for any typographical errors or mistakes which may have occurred during the production of this brochure. Measurements and dimensions are not binding. We reserve the right to make constructional and technical alterations.

FSC® (FSC-C116128)

We buy and use mainly FSC® Mix "from responsible sources". Purchasing, storage, Processing and sales of FSC® products are monitored by an FSC®-accredited certifier. Our certification runs under the COC (Chain of custody). The system of chain of custody certification guarantees consumers that actually comes with FSC® seal the wood product from a certified and responsibly managed forestry operation.

PUBLISHED BY

Vauth-Sagel | Neue Straße 27 | D-33034 Brakel-Erkeln
Phone: +49 (0) 5272 601-01 | email: vs@vauth-sagel.de | www.vauth-sagel.com

May 2015 | © by Vauth-Sagel | All rights reserved

Vauth-Sagel app: More information and product details



The Vauth-Sagel app provides dealers, cabinet makers, joiners and installers all the information they need on every aspect of the Vauth-Sagel products.

VAUTH-SAGEL | vs@vauth-sagel.de | www.vauth-sagel.com